



# MONTHLY MEMBERSHIP PROGRESS REPORT

District 25 G

Results as of: 12/31/2017

GMT: STEVE ANTON

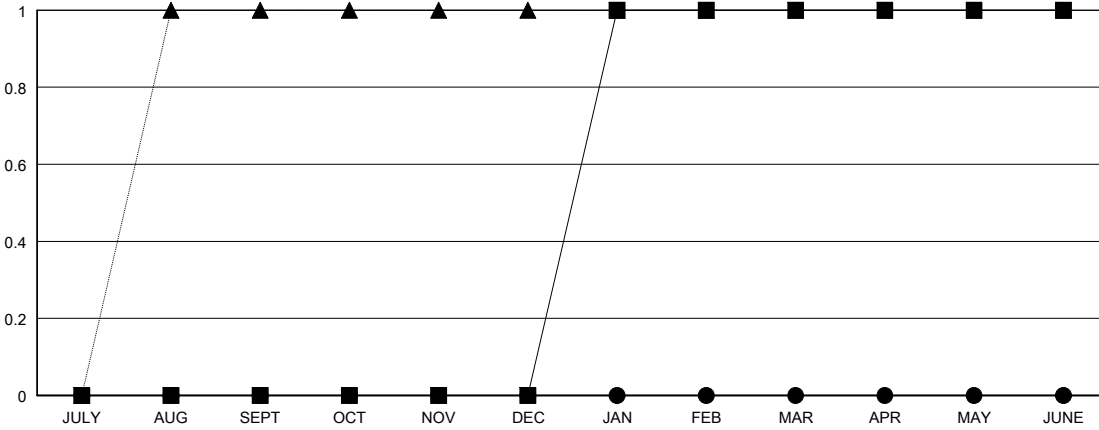
LOCATION INDIANA

GMT CA

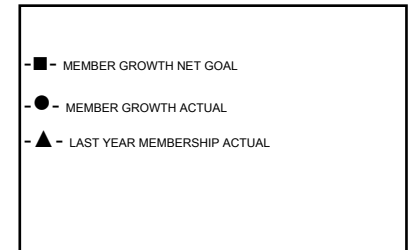
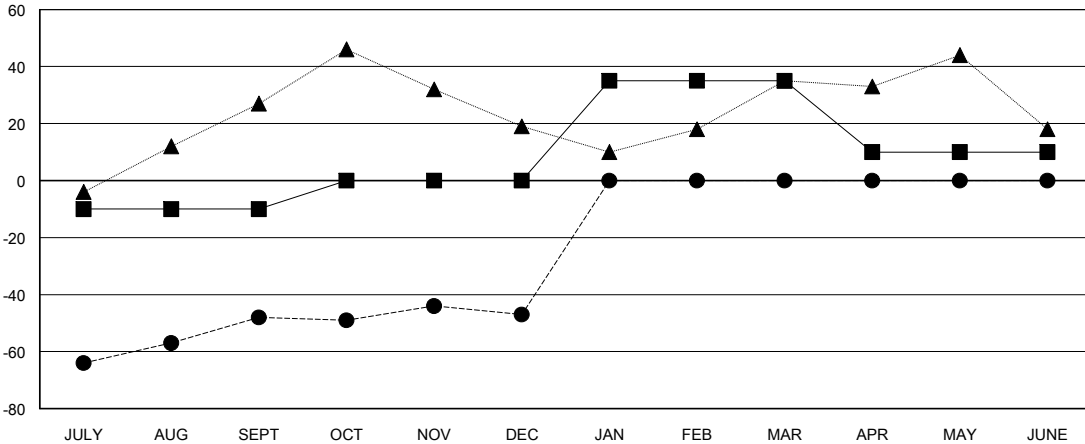
Clubs			
RESULTS FOR 2017-2018			
QUARTER	NEW CLUB GOAL	NEW CLUBS	DROPPED CLUBS
JULY/AUG/SEPT	0	0	0
OCT/NOV/DEC	0	0	1
JAN/FEB/MAR	1	0	0
APR/MAY/JUNE	0	0	0

Members			
RESULTS FOR 2017-2018			
QUARTER	MEMBER GROWTH NET GOAL	MEMBER GROWTH ACTUAL	DROPPED MEMBERS ACTUAL (including transfers)
JULY/AUG/SEPT	-10	33	80
OCT/NOV/DEC	10	23	22
JAN/FEB/MAR	35	0	0
APR/MAY/JUNE	-25	0	0

GOALS AND ACTUAL NEW CLUBS CUMULATIVE



GOALS AND ACTUAL MEMBERS CUMULATIVE



DROPPED CLUBS: 1
------------------

20 CLUBS OF 52 ADDED 1 OR MORE NEW MEMBERS

GENDER DISTRIBUTION	
MALE	1,063 (71.73%)
FEMALE	419 (28.27%)
Women Percentage Fiscal Year Goal: 27%	

DROPPED MEMBERS	
DECEASED	9
CLUB CANCELLED	0
OTHER	93
<b>TOTAL</b>	<b>102</b>

[CLICK HERE FOR CUMULATIVE MEMBERSHIP DATA](#)

TOTAL FAMILY UNIT MEMBERS	321
FAMILY MEMBERS PAYING HALF DUES	163